



EDWARD HARTWIG (1909-2003)

„KEEP OUT!“

A CENTENARY RETROSPECTIVE EXHIBITION

KAISER&CREAM FRANKFURT

Mainzer Landstraße 65-67, Frankfurt am Main
September 05 – Oktober 10 2009

St. Gallen University of St. Gallen

Dufourstrasse 50, St. Gallen, Switzerland
September 22 – Oktober 09 2009

Polnisches Institut Düsseldorf

Citadellstraße 7, Düsseldorf
November 24 2009 – Februar 19 2010

Edward Hartwig, the great Polish master photographer, would have turned hundred 2009. Reason enough for a rediscovery of his comprehensive oeuvre.

In all of his works he captures the intensity of the moment in an inimitable manner, whether in his portraits, his architecture and landscape photography or, last but not least, his photography of theater and dance performances. The most characteristic trait in his work is its experimental expression. Hartwig was convinced that in the field of photography, innovative artistic insights can only be gained by applying innovative perspectives and creative methods. Experimenting opened a path for new perspectives in photography: In order to enhance the dynamism, expressivity and structural impact of his works, he uses – particularly in his black and white photography – intense contrasts of light and shadow and thus combines real and fantastic elements with purely abstract ones. Hartwig's experiments result in compositions of truly unique suspense and rhythm.

EDWARD HARTWIG - LIST OF WORKS FROM 34 - 65



Portrait with a Cigarette, 1958 (34)
36,3 x 27,5 cm
Baryt-Print (Vintage)
4.200 €, Edward Hartwig Estate



Mannequins, Paris, 1973 (35)
42 x 37,5 cm
Baryt-Print (Vintage)
4.200 €, Edward Hartwig Estate



Portrait of a Film Actress (36)
36 x 27,8 cm
Baryt-Print – Edition of 5
2.200 €, Moonblinx Gallery



Ewa and Danka, 60s (37)
43,5 x 35,5 cm
Baryt-Print (Vintage)
5.300 €, Edward Hartwig Estate



Junk Room, 1972 (38)
46,5 x 37,7 cm
Baryt-Print (Vintage)
4.200 €, Edward Hartwig Estate



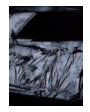
Old Brussels, 60s (39)
42 x 32 cm
Baryt-Print (Vintage)
4.200 €, Edward Hartwig Estate



She and the Sphinx, 60s (40)
36 x 27,8 cm
Baryt-Print – Edition of 5
2.200 €, Moonblinx Gallery



Untitled, 80s (41)
37,7 x 28,5 cm
Baryt-Print (Vintage)
4.200 €, Edward Hartwig Estate



Surface, 1987 (42)
43 x 37,4 cm
Baryt-Print (Vintage)
4.200 €, Edward Hartwig Estate



Problems, 1968 (43)
35 x 25,2 cm
Baryt-Print (Vintage)
4.200 €, Edward Hartwig Estate



Portrait, 70s (44)
57,5 x 39,3 cm
Baryt-Print (Vintage)
5.300 €, Edward Hartwig Estate



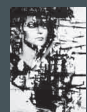
Ruins of Warsaw, 2003 (45)
38,6 x 28,5 cm
Baryt-Print (Vintage)
3.800 €, Edward Hartwig Estate



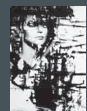
Landscape, 1985 (46)
22,5 x 16,5 cm
Baryt-Print (Vintage)
3.800 €, Edward Hartwig Estate



Portrait of a friend, 70s (47)
23 x 27,5 cm
Baryt-Print (Vintage)
3.800 €, Edward Hartwig Estate



Portrait of a girl, 1990 (48)
130 x 90 cm
C-Print – Edition of 5
4.200 €, Moonblinx Gallery



Portrait of a girl, 1990 (49)
35,3 x 25,1 cm
Baryt-Print (Vintage)
4.200 €, Edward Hartwig Estate



Dancer, 1993 (50)
26,1 x 19,9 cm
Baryt-Print (Vintage)
3.800 €, Edward Hartwig Estate



Moonscape, 80s (51)
36,7 x 29,6 cm
Baryt-Print (Vintage)
4.000 €, Edward Hartwig Estate



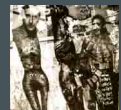
Scandinavian Landscape, 1974 (52)
27,7 x 37 cm
Baryt-Print (Vintage)
4.000 €, Edward Hartwig Estate



Landscape, 1975 (53)
34,7 x 29,8 cm
Baryt-Print (Vintage)
4.000 €, Edward Hartwig Estate



Tadeusz Kantor, Triptych, 1975 (54)
34,5 x 23,8 cm
Baryt-Print (Vintage)
4.000 €, Edward Hartwig Estate



Tadeusz Kantor, Triptych, 1975 (55)
32,7 x 38 cm
Baryt-Print (Vintage)
4.300 €, Edward Hartwig Estate



Tadeusz Kantor, Triptych, 1975 (56)
34,4 x 23,5 cm
Baryt-Print (Vintage)
4.000 €, Edward Hartwig Estate



Studio of Tadeusz Kantor, 1975 (57)
38 x 37,4 cm
Baryt-Print (Vintage)
4.300 €, Edward Hartwig Estate



Henryk Berlewi – Models, 1962 (58)
130 x 90 cm
C-Print – Edition of 5
4.200 €, Moonblinx Gallery



Henryk Berlewi – Models, 1962 (59)
36 x 27,8 cm
Baryt-Print – Edition of 5
2.200 €, Moonblinx Gallery



Henryk Berlewi – Models, 1962 (60)
36 x 27,8 cm
Baryt-Print – Edition of 5
2.200 €, Moonblinx Gallery



Henryk Berlewi – Models, 1962 (61)
36 x 27,8 cm
Baryt-Print – Edition of 5
2.200 €, Moonblinx Gallery



Henryk Berlewi – Models, 1962 (62)
36 x 27,8 cm
Baryt-Print – Edition of 5
2.200 €, Moonblinx Gallery



Henryk Berlewi – Models, 1962 (63)
36 x 27,8 cm
Baryt-Print – Edition of 5
2.200 €, Moonblinx Gallery



Henryk Berlewi – Models, 1962 (64)
130 x 90 cm
C-Print – Edition of 5
2.200 €, Moonblinx Gallery



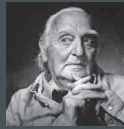
Henryk Berlewi – Models, 1962 (65)
36 x 27,8 cm
Baryt-Print – Edition of 5
2.200 €, Moonblinx Gallery

Edward Hartwig (1909-2003)

A Centenary Retrospective exhibition



List of works
Prices



EDWARD HARTWIG (1909-2003) „EINTRITT VERBOTEN!“

EINE RETROSPEKTIVE ZUM 100. GEBURTSTAG

KAISER&CREAM FRANKFURT
Mainzer Landstraße 65-67, Frankfurt am Main
05. September – 10. Oktober 2009

St. Gallen University of St. Gallen
Dufourstrasse 50, St. Gallen, Schweiz
22. September – 09. Oktober 2009

Polnisches Institut Düsseldorf
Citadellstraße 7, Düsseldorf
24. November 2009 – 19. Februar 2010

Edward Hartwig, der große polnische Meisterfotograf, wäre 2009 hundert Jahre alt geworden. Grund genug, sein umfangreiches Oeuvre neu zu entdecken. In all seinen Werken hält er auf unnachahmliche Weise die Intensität des Augenblicks fest, sei es in seinen Portraits, seiner Architektur- und Landschaftsfotografie und nicht zuletzt bei seinen Theater- und Tanzfotografien. Besonders charakteristisch ist jedoch die experimentelle Sprache seines Werkes. Hartwig war überzeugt, dass sich in der Fotografie nur dann neue künstlerische Erkenntnisse gewinnen lassen, wenn man entsprechend neuartige Sichtweisen und künstlerische Methoden einsetzt. Der Weg zum neuen Blick in der Fotografie ist das Experiment: Um die Dynamik, Expressivität und strukturelle Ausdruckskraft seiner Motive zu steigern, wählt er – besonders in seinen Schwarz-Weiß-Arbeiten – intensive Licht- und Schattenkontraste, führt reale und fantastische mit rein abstrakten Bildelementen zusammen. Das Ergebnis sind Bildkompositionen von einzigartiger Spannung und Rhythmik.

EDWARD HARTWIG - WERKVERZEICHNIS VON 1 - 33



Shirt, 1986 (1)
130 x 90 cm
C-Print – Edition of 5
4.200 €, Moonblinx Gallery



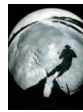
Shirt, 1986 (2)
35,7 x 26,3 cm
Baryt-Print (Vintage)
3.600 €, Edward Hartwig Estate



Antiques, 70s (3)
58,5 x 44cm
Baryt-Print (Vintage)
4.700 €, Edward Hartwig Estate



Untitled, 70s (4)
36,4 x 27,3 cm
Baryt-Print (Vintage)
4.200 €, Edward Hartwig Estate



Self-portrait, 60s (5)
36 x 27,8 cm
Baryt-Print - Edition of 5
2.200 €, Moonblinx Gallery



Act Outdoor, 70s (6)
43 x 35,7 cm
Baryt-Print (Vintage)
4.300 €, Edward Hartwig Estate



Portrait of a Girl, 1950 (7)
130 x 90 cm
C-Print – Edition of 5
4.200 €, Moonblinx Gallery



Portrait of a Girl, 1950 (8)
38,5 x 26 cm
Baryt-Print (Vintage)
4.700 €, Edward Hartwig Estate



Bright Act, 50s (9)
90 x 130 cm
C-Print - Edition of 5
4.200 €, Moonblinx Gallery



Bright Act, 50s (10)
35 x 38 cm
Baryt-Print (Vintage)
4.200 €, Edward Hartwig Estate



Study, 1984 (11)
35,5 x 24 cm
Baryt-Print (Vintage)
3.800 €, Edward Hartwig Estate



At the Dog Show, 60s (12)
27,9 x 35 cm
Baryt-Print (Vintage)
3.800 €, Edward Hartwig Estate



Phenomena, 1974 (13)
28 x 38,5 cm
Baryt-Print (Vintage)
3.800 €, Edward Hartwig Estate



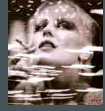
World of Imagination II., 1970 (14)
39,5 x 37,7 cm
Baryt-Print (Vintage)
4.200 €, Edward Hartwig Estate



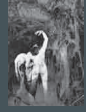
Composition X., 1988 (15)
49,5 x 35,2 cm
Baryt-Print (Vintage)
4.200 €, Edward Hartwig Estate



Soloist in a Ballet, 70s (16)
39,5 x 51 cm
Baryt-Print (Vintage)
4.200 €, Edward Hartwig Estate



Krystyna Janda, 1988 (17)
26,5 x 35,9 cm
Baryt-Print (Vintage)
4.300 €, Edward Hartwig Estate



Ballett, 70s (18)
22,7 x 16,7 cm
Baryt-Print (Vintage)
3.300 €, Edward Hartwig Estate



Act, 1980 (19)
23,5 x 18,5 cm
Baryt-Print (Vintage)
3.300 €, Edward Hartwig Estate



Gallery, 70s (20)
36 x 36,2 cm
Baryt-Print (Vintage)
4.200 €, Edward Hartwig Estate



Bridge Poniatowskiego, 1989, Warsaw (21)
36 x 45,5 cm
Baryt-Print (Vintage)
4.200 €, Edward Hartwig Estate



Word of Imagination I., 70s (22)
22,7 x 16,7 cm
Baryt-Print (Vintage)
3.300 €, Edward Hartwig Estate



Act, Switzerland 1990 (23)
23,5 x 18,5 cm
Baryt-Print (Vintage)
3.300 €, Edward Hartwig Estate



Soloist, 70s (24)
42,5 x 34,2 cm
Baryt-Print (Vintage)
4.200 €, Edward Hartwig Estate



Untitled, 1986 (25)
22 x 16,5 cm
Baryt-Print (Vintage)
3.300 €, Edward Hartwig Estate



Portrait of a Professor, 1988 (26)
49 x 37 cm
Baryt-Print (Vintage)
4.200 €, Edward Hartwig Estate



Portrait of the Grandson, 1988 (27)
29,3 x 37,4 cm
Baryt-Print (Vintage)
4.200 €, Edward Hartwig Estate



Mannequin, 1989 (28)
37 x 28,9 cm
Baryt-Print (Vintage)
4.200 €, Edward Hartwig Estate



Tree Landscape, 1978 (29)
100 x 90 cm
C-Print – Edition of 5
3.800 €, Moonblinx Gallery



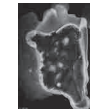
Tree Landscape, 1978 (30)
22,8 x 20,4 cm
Baryt-Print (Vintage)
4.200 €, Edward Hartwig Estate



Act, 70s (31)
23 x 18 cm
Baryt-Print (Vintage)
3.800 €, Edward Hartwig Estate



Portrait, 70s (32)
24 x 18,5 cm
Baryt-Print (Vintage)
3.300 €, Edward Hartwig Estate



Composition, 1970 (33)
39,4 x 37,5 cm
Baryt-Print (Vintage)
4.000 €, Edward Hartwig Estate

MOONBLINX GALLERY

MOONBLINX GALLERY wurde 2008 in Frankfurt am Main gegründet mit dem Ziel, herausragender Fotokunst des 20. und 21. Jahrhunderts ein internationales Forum zu geben. Neben noch unentdeckten Klassikern der Fotografie engagiert sich die Galerie besonders für fotografische Positionen der Gegenwartskunst, die bei höchstem ästhetischem Anspruch außergewöhnliche inhaltliche oder grenzüberschreitende Konzepte verfolgen.

MOONBLINX is a privately owned and run arts and media company established in Frankfurt a.M. / Germany in 2008. MOONBLINX GALLERY is committed to providing an international forum to 20th and 21st century's extraordinary photographic art exclusively representing international Photography Artists and Estates.

Moonblinx Gallery
Beethovenstr. 64
60325 Frankfurt am Main

Tel.: 069-1750 8863
Fax.: 069-1752 7222

email: info@moonblinx.com
www.blog.moonblinx.com

Premium Partner:



A STAR ALLIANCE MEMBER